



Product Offering

OmecElectric.com

OMECE Motors



Empowering Industries with Unmatched Performance and Reliability

For over 80 years, OMECE has been at the forefront of developing and manufacturing cutting-edge motors that excel in the most demanding industrial applications. Our commitment to quality and performance has made us a trusted name in the industry in many countries around the globe.

Our team of R&D engineers brings extensive expertise and a passion for solving specific customer needs. We meticulously analyze each requirement and closely monitor market trends to ensure we deliver the right products for your specific needs.

At OMECE, we understand that longevity, high efficiency, and reliability are crucial for your operations. That's why we guarantee exceptional durability and optimized performance.

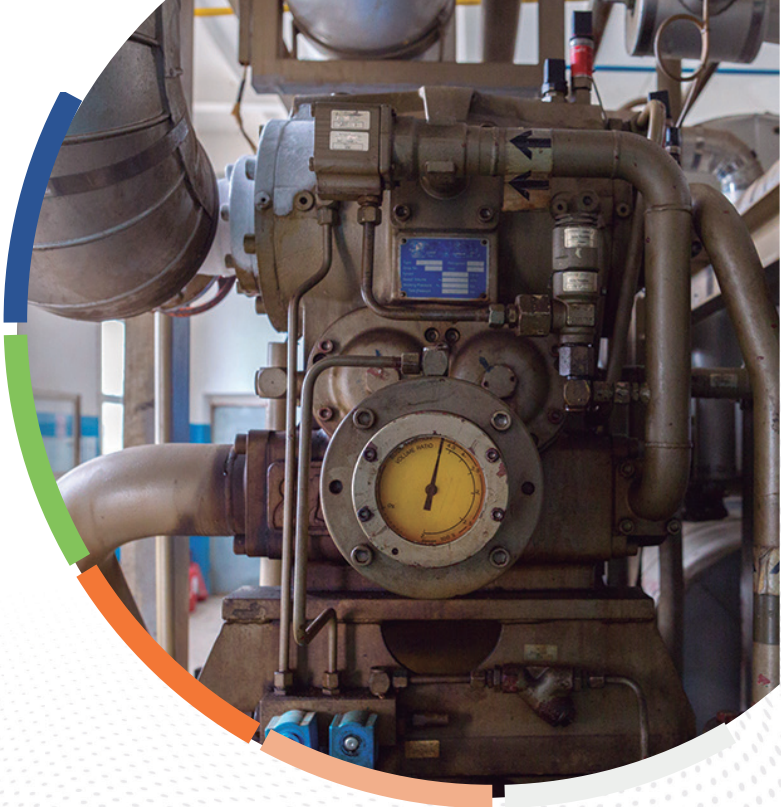
When you choose OMECE, you gain a partner that prioritizes your success. Our motors are built to empower your operations, delivering unmatched performance and peace of mind.

Elevate your performance and efficiency with OMECE: *The paramount of quality, innovation, and reliability.*

Complete Portfolio For Your Industry



OMECE offers reliability, high efficiency, and superior performance for most demanding applications.



Complete Portfolio For NEMA Frames



143~6808 (1HP to 10,00HP)

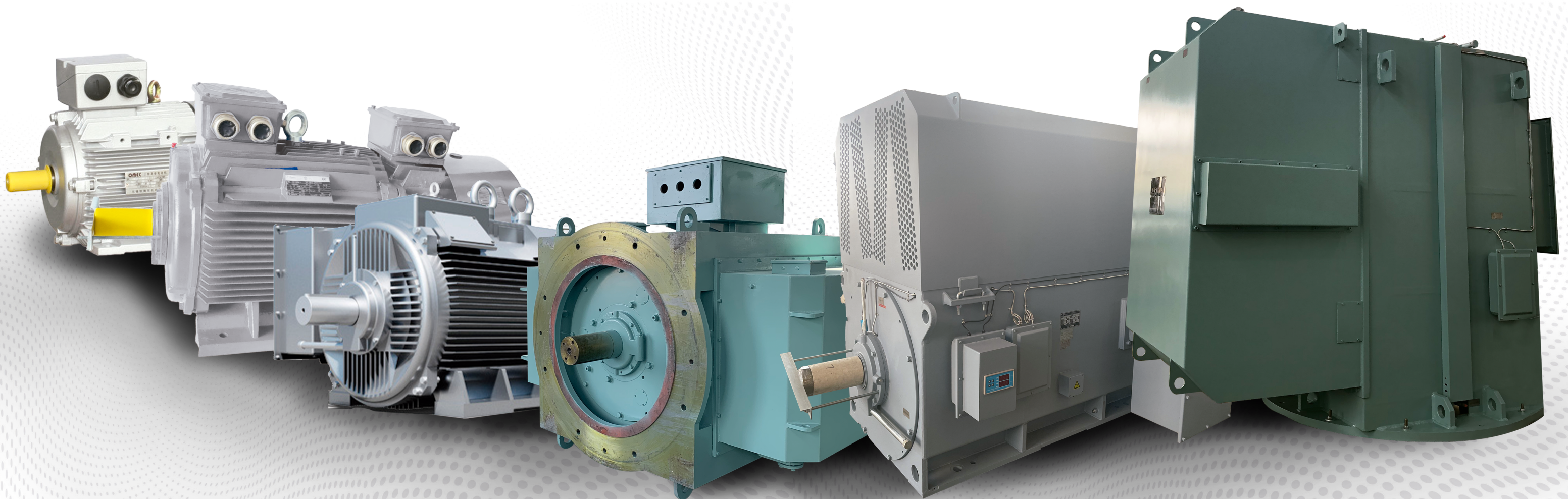
- Cast Iron
- TEFC
- Open Drip Proof (ODP)
- Design D
- TEAAC / TEWAC
- IEEE841
- Hazardous Areas

Special Motors



OMEC has a complete motors portfolio to fit your application and specific needs.

- JP & JM Designs
- Washdown Duty
- IEC Frames
- Permanent Magnet
- Roller Table
- Wind Power Generation
- Alternators
- Marine Duty
- Above NEMA Power Ratings
- Specific Customer Designs
- Forced Ventilated



OmecElectric.com

OmecElectric.com

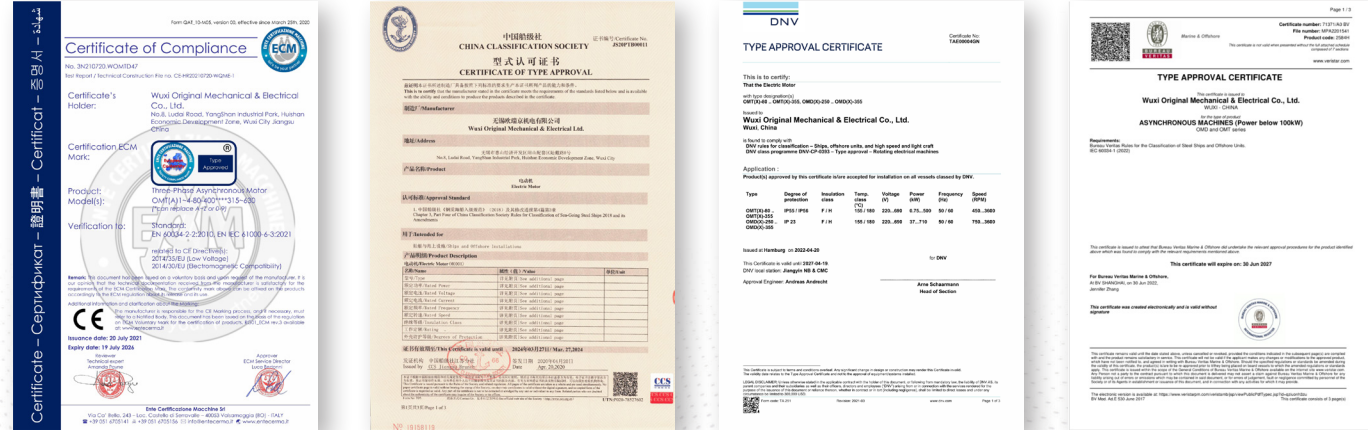
OMEC Motors: The Product You Need



OMEC Plus – General Purpose – Main Features

- Motor Power: 1-300HP.
- Service Factor: 1.25
- Dual Voltage: 230V/460V.
- Default D/Y 2-6 Poles.
- Nema B Torque Design.
- Terminal Box able to rotate 4x90 degrees.
- Bi-directional Rotation.
- Motor UL Recognized, CSA, CA US, CE Labeled. Class 1 Div 2 Groups B,C, and D.
- Paint System C2 .
- Suitable for Inverter Driven Operation.
- Paint Color: Light Grey RAL7030 IP5.
- Conduit Box Material: Plate Steel.
- Stainless Steel Name Plate.

**Local Inventory
Warranty and Technical Advising
Short Lead Times and Fast Deliverys**





Contact Info

Gudnar Rodriguez

Sales Manager
rodriguez@omecelectric.com

Product Offering

350 Nursery Rd, Suite 7200 J, The Woodlands, TX 77380



[OmecElectric.com](https://www.OmecElectric.com)

info@OmecElectric.com 